

idealpos[®]



Ares

Touchscreen POS Terminal

www.idealpos.com.au



Ares

Touchscreen POS Terminal

The Idealpos Ares POS Terminal features cutting edge technology with unsurpassed reliability, durability and robust performance.

Fan-less in design, the die-cast rear housing provides optimal heat dissipation while maintaining low power consumption.

Customize your Ares POS terminal by adding peripherals including magnetic Card Reader, RFID Clerk Reader and the sleek 9.7" Customer Advertising Display.

Both the 15" POS Panel and 9.7" Customer Display can be YESA mounted for flexible installation on a Pole or Wall Mount.

With a small footprint and foldable base, the Idealpos Ares provides exceptional flexibility to any application.



Intel® Celeron®
J1900 Processor



Fanless Design



15" Projected
Capacitive Touch
Screen



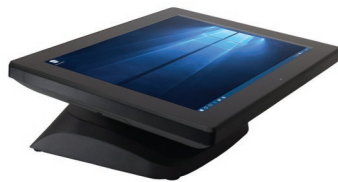
Microsoft®
Windows®
Compatible



Flexible Peripheral
Support

Dual Hinge Base

Easily position the touch screen to different height and tilt angles to allow flexible position for any installation type.



Customer Advertising Display

With the Integrated 9.7" Customer Display, you can display images and movies to show promotional material as well as items purchased when serving your Customers. The 9.7" Display can also be VESA mounted if using a Pole instead of the standard base.



Customer Advertising Display

With the Integrated 9.7" Customer Display, you can display images and movies to show promotional material as well as items purchased when serving your Customers. The 9.7" Display can also be VESA mounted if using a Pole instead of the standard base.



Port Access

The I/O Ports are easily accessible and are concealed behind a cover which can be screwed in to prevent users from disconnecting cables accidentally.



Peripheral Support

The Idealpos Ares terminal integrates with a Magnetic Card Reader, RFID Reader and Magnetic Card / RFID Reader Combo. With these peripherals, you can take advantage of additional features in your POS System such as Customer Loyalty Cards and Clerk Wristbands.



System Configuration

Intel® Processor	Intel® Celeron® J1900 Quad Core CPU
Memory	4GB DDR3 SO-DIMM RAM
Storage	64GB 2.5" Solid State Hard Drive
Power Supply	65W External Adapter. Voltage +19VDC 3.42A max.
Operating System	Windows® 8.1 Industry Retail Pro Embedded
System Dimensions	370 x 300 x 236mm
System Weight	5.68Kg
VESA Mount	VESA 100*100mm compliant
Product Certification	CE / FCC
Operating Temperature	0° C to 40° C

I/O Port Connectivity

USB Port	6 x USB 2.0
Serial Port	3 x RS-232 (RJ45 connector)
Network LAN	1 x Gigabit Ethernet RJ45
VGA Display	1 x DB-15 VGA Port
Cash Drawer	1 x RJ-11 12v

Optional Peripherals

Magnetic Card Reader	3 Track Serial Interface
RFID Clerk Wristband Reader	13.56 MHz Frequency/ Mifare 1K IC RFID Wristbands
MSR/RFID Combo	Magnetic Card Reader and RFID Combo
Customer Display	9.7" LED Customer Display
VESA Mount	VESA 100*100mm compliant

Intel, the Intel logo, Celeron and Celeron Inside are trademarks of Intel Corporation or its subsidiaries in the U.S. and/or other countries. Microsoft and Windows are either registered trademarks or trademarks of Microsoft Corporation in the United States and/or other countries.



www.idealpos.com.au



sales@ybs1.com.au
www.ybs1.com.au